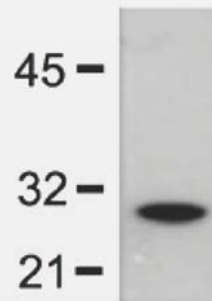


## Anti GST Monoclonal Antibody

<b>Catalog No.</b>	■	LT0423, 50ug, lyophilized with PBS, pH7.4
<b>Description</b>	■	Anti-GST Tag (GST.B6) Monoclonal Antibody
<b>Clonality</b>	■	GST.B6
<b>Host Species   Isotype</b>	■	Mouse   IgG2a
<b>Immunogen</b>	■	GST protein
<b>Specificity</b>	■	Recognizes native and denatured forms of purified GST or GST fusion proteins
<b>Sensitivity</b>	■	WB (with ECL): 10-50ng of purified GST or GST fusion proteins
<b>Purification</b>	■	Protein A affinity chromatography from mouse ascites fluid
<b>Application</b>	■	Dot, ELISA, IS, WB
<b>Working Condition</b>	■	WB (with ECL): 1:1000-3000 dilutions (incubate for 1 hour at room temperature) IS: 1:500-2000 dilution. For best results with other assays (e.g.: Dot, ELISA, etc), please determine optimal working dilution by titration test. Reconstitute the lyophilized antibody with deionized water (or equivalent) to a final concentration of 50ug/50ul.
<b>Storage</b>	■	Store at -20°C for up to 2 years. Centrifuge after first thaw to maximize product recovery. Aliquot to avoid repeated freeze-thaw cycles. Store aliquots at 4°C for 1-2 weeks



**Fig.** 1:5000 (0.2µg/mL) Ab dilution probed against BL-21 bacteria lysate expressing the GST protein