

### Anti ERK1/2 Monoclonal Antibody

**Catalog No.** ■ LT9996

**Description** ■ Anti-ERK1/2 (E31R) Signal Transduction Monoclonal Antibody

**Clonality** ■ E31R

**Host Species | Isotype** ■ Mouse | IgG1

**Immunogen** ■ Full length recombinant human ERK1 protein

**Specificity** ■ Recognizes human ERK1 and ERK2 proteins

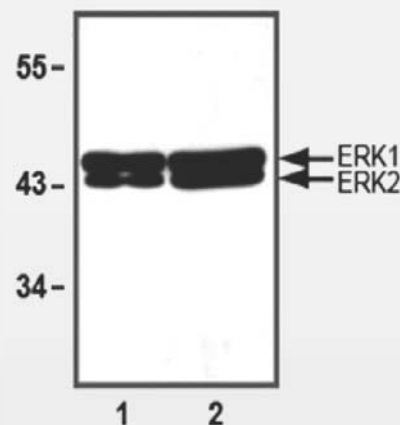
**Cross Reactivity** ■ WB: ERK1 and ERK2 from human cells. ERK1 and ERK2 from other species may also be detectable

**Purification** ■ Protein A affinity chromatography from mouse ascites fluid

**Application** ■ WB

**Working Condition** ■ WB (with ECL): 1:1000 dilutions (incubate for 1 hour at room temperature)  
For best results with other assays, please determine optimal working dilution by titration test

**Storage** ■ Store at -20°C for up to 2 years. Centrifuge after first thaw to maximize product recovery. Aliquot to avoid repeated freeze-thaw cycles.  
Store aliquots at 4°C for 1-2 weeks



**Fig.** 1:1000 (1µg/mL) Ab dilution used in WB of 10µg (1) and 30µg (2) HeLa cell lysates