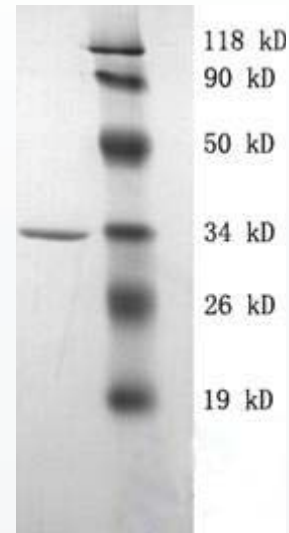


Recombinant Staphylococcal Protein A

Catalog No.	■	LT12008
Packing Details	■	10mg
Formulation	■	Lyophilized from 5 mM PBS at pH 7.4.
Mol. Wt.	■	33 kDa
Resources	■	Escherichia coli (E. coli)
Purity	■	≥95%
Specific activity	■	No purification tag, containing A, B, C, D and E structure domains
Storage	■	-20°C
Shelf Life	■	3 years



M: Protein marker standard

Lane 1: Recombinant Staphylococcal Protein A

Description

Protein A is a cell wall protein derived from *Staphylococcus aureus*. It exhibits unique binding properties. It can bind to IgG from a variety of mammalian species and to some IgM and IgA.

It preferentially binds with the Fc region of immunoglobulins through interaction with the heavy chain. It can be conjugated to a wide variety of reporter molecules, including fluorescent dyes, enzyme markers, biotin, colloidal gold, and radioactive iodine without affecting the antibody binding site, which makes it suitable for use in immunological and other biological studies. It can also be immobilized onto solid supports such as agarose beads for total IgG-mediated extraction of proteins of interest from ascitic fluid, serum, culture supernatants, and cell extracts.

Notes

It is recommended that the product be reconstituted with sterile water into a final concentration of 10 mg/ml. Avoid multiple freeze-thaw cycles and exposure to frequent changes in temperature.

The use of strong acids and bases, strong oxidants, and high concentrations of organic solvents should be avoided to prevent denaturation.

For research use only!