

Anti β -Tubulin Monoclonal Antibody

Catalog No. ■ LT9991, 50ug, lyophilized with PBS, pH7.4

Description ■ AAnti- β -Tubulin (BT7R) Loading Control Monoclonal Antibody

Clonality ■ BT7R

Host Species | Isotype ■ Mouse | IgG2a

Immunogen ■ β -Tubulin N-terminal peptide-KLH conjugates

Specificity ■ Recognizes native and denatured forms of β -Tubulin (~50kDa)

Cross Reactivity ■ β -Tubulin from human, monkey, mouse, rat, rabbit, chicken.
 β -Tubulin from other species may also be detectable

Purification ■ Protein A affinity chromatography from mouse ascites fluid

Application ■ Dot, ELISA, IS, WB

Working Condition ■ WB (with ECL): 1:2000-5000 dilution (incubate for 1 hour at room temperature)
 IS: 1:500-2000 dilution. For best results with other assays (e.g.: Dot, ELISA, etc), please determine optimal working dilution by titration test. Reconstitute the lyophilized antibody with deionized water (or equivalent) to a final concentration of 50ug/50ul.

Storage ■ Store at -20°C for 2 years or more. Centrifuge after first thaw to maximize product recovery. Aliquot to avoid repeated freeze-thaw cycles. Store aliquots at 4°C (add 0.05% NaN₃) for several days to weeks



Fig. 01 50kD band is Anti- β -Tubulin (BT7R) at 1:2000 dilution (0.5 μ g/mL); 42kD band is Anti- β -Actin (BA3R) at 1:1000 dilution (1 μ g/mL); 37kD band is Anti-GAPDH (GA1R) at 1:5000 dilution (0.2 μ g/mL)

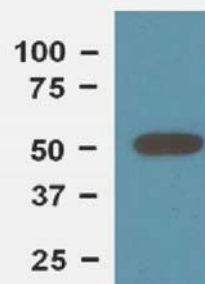


Fig. 02 1:4000 (0.25 μ g/mL) Ab dilution used in WB of 10 μ g/lane mouse brain tissue lysates